

**RCSI Bahrain**  
**Student Services**  
**Accommodation List 2024 - 2025**





**Accommodation List**



Click on  
the Number to get more  
Information





## NASSER Tower

# 01

- \* FF for 1 bedroom BD 350 (BD 20 Limit)
- \* FF for 2 bedrooms BD 450 - BD 550 (BD 30 Limit)
- \* Electricity, water internet included (BD 20 - 30 Limit)
- \* 24 hours security, ladies + men's gym, pool
- \* Room Service

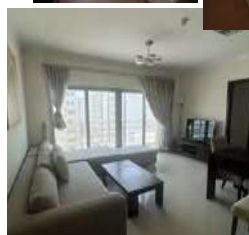
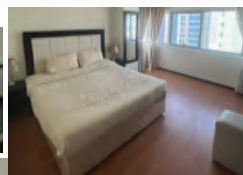


📞 **Jalal Al Moosawi**  
(+973) 3332 3382

✉ [info@seyaj-bh.com](mailto:info@seyaj-bh.com)



01:00..... Walk to the RCSI gate



## LA VIDA Tower

# 02



- \* FF 2 bedrooms apartments
- \* Price BD 370
- \* Excluding electricity, water & internet ( BD 30 Limit )
- \* 24 hours security, big gym

📞 **Jalal Al Moosawi**  
(+973) 3332 3382

✉ [info@seyaj-bh.com](mailto:info@seyaj-bh.com)



03:00..... Walk to the RCSI gate



Click on the Number to get the Location



## DAR AL EZZ 3

### 03

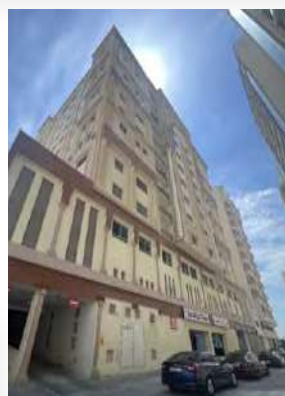
- \* FF 1 bedroom apartments for BD 270 (BD 20 Limit)
- \* FF 2 bedrooms apartments for BD 330 (BD 30 Limit)
- \* Electricity, water & internet included (BD 20 – 30 Limit)
- \* Pool, gym & 24 hours security



☎ Mossa  
(+973) 3352 5804



02:00..... Walk to the RCSI gate



## DAR AL EZZ 1

### 04



- \* FF 1 bedroom BD 250 – 270 (BD 20 Limit)
- \* FF 2 bedrooms BD 350 – 370 (BD 25 Limit)
- \* Electricity, water & internet included (BD 20 - 25 Limit)
- \* Pool, ladies + men's gym & 24 hours security

☎ Mossa  
(+973) 3352 5804



03:00..... Walk to the RCSI gate



Click on the Number to get the Location



## DAR AL EZZ 2

### 05

- \* FF 1 Bedroom BD 350 (BD 20 Limit)
- \* FF 2 Bedrooms BD 400 (BD 30 Limit)
- \* Electricity, water & internet
- \* Gym, pool
- \* 24 hours security



☎ Mossa  
(+973) 3352 5804



04:00..... Walk to the RCSI gate

## NIZAR BUILDING

### 06



- \* FF 2 bedrooms apartments
- \* Price BD 430
- \* Electricity, water internet included (BD 30 Limit)
- \* Pool, gym & 24 hours watchman.
- \* Housekeeping Once a week



☎ Jalal Al Moosawi  
(+973) 3332 3382

✉ info@seyaj-bh.com



04:00..... Walk to the RCSI gate



Click on the Number to get the Location



## BUSAITEEN Tower

07



Ali  
(+973) 3232 9466

- \* Studio apartment BD 180 (BD 20 Limit)
- \* FF 2 Bedrooms apartment BD 300 (BD 50 Limit)
- \* FF 4 Bedrooms apartment BD 550 (BD 60 Limit)
- \* Pool, gym & 24 hours watchman
- \* Parking



05:00..... Walk to the RCSI gate



## PLUS Tower

08



Sales Team  
(+973) 3220 0032

- \* FF studio BD 290 - 320 (BD 20 Limit)
- \* FF 1 Bedroom Apartment BD 400 (BD 30 Limit)
- \* FF 2 Bedrooms Apartment BD 550 (BD 40 Limit)
- \* Electricity, water & internet included
- \* Gym, pool, 24 hours security & cleaning

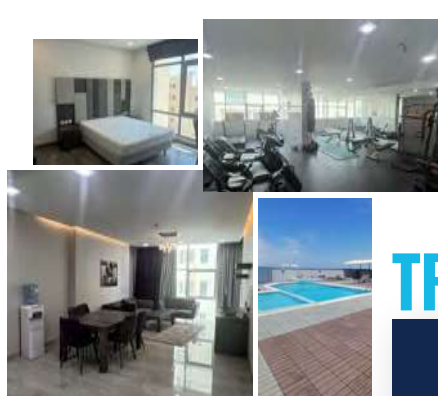


04:00..... Walk to the RCSI gate



Click on the Number to get the Location





## TRITON Tower

09



☎ Mohammed Musa  
+973 3800 4343

✉ mmusa@alhamerhol-ding.com

- \* FF 1 Bedroom Apartment BD 450 - 470 (BD 20 Limit)
- \* FF 2 Bedrooms Apartment BD 550 - 600 (BD 25 Limit)
- \* Electricity, water & internet included
- \* Pool , Gym, Suna, Jacuzzi , BBQ , Laundry & Study Room
- \* Housekeeping Once a week



03:00..... Walk to the RCSI gate

## DREAM PLAZA

10



☎ Jalal Al Moosawi  
(+973) 3332 3382

✉ info@seyaj-bh.com



- \* FF for 2 Bedroom BD 400
- \* FF for 3 Bedrooms BD 750
- \* Electricity, water internet included (BD 50 Limit)
- \* 24 hours security, gym & pool
- \* Cleaning Once on weekly basis



04:00..... Walk to the RCSI gate



Click on the Number to get the Location



## AL ASFOUR Tower

11

- \* FF for 2 Bedrooms BD 450
- \* Electricity, water internet included (BD 40 Limit)
- \* Pool, Gym, Suna, Jacuzzi, BBQ & Games Room
- \* 24 hours security , parking & housekeeping

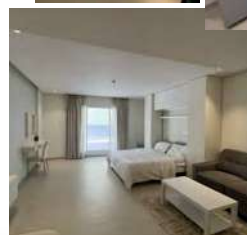


📞 **Jalal Al Moosawi**  
(+973) 3332 3382

✉ [info@seyaj-bh.com](mailto:info@seyaj-bh.com)



04:00..... Walk to the RCSI gate



## EXECUTIVE SUITES

12



- \* FF Studio BD 280 - 300 (BD 20 Limit)
- \* FF 1 Bedroom Apartment BD 390 - 400 (BD 25 Limit)
- \* Electricity, water internet included
- \* Pool, gym, game room & studying room
- \* 24 hours security , parking & housekeeping



**Sales Team**  
(+973) 3220 0032



04:00..... Walk to the RCSI gate



Click on the Number to get the Location





## DAR Tower 13

- \* FF studio BD 280 - 300 (BD 20 Limit)
- \* FF 1 Bedroom Apartment BD 420 (BD 30 Limit)
- \* FF 2 Bedrooms Apartment BD 550 (BD 40 Limit)
- \* Electricity, water & internet included
- \* Gym, pool, 24 hours security & cleaning



 **Sales Team**  
(+973) 3220 0032



04:00..... Walk to the RCSI gate




## YARA Tower 14



- \* FF for 3 bedrooms BD 400
- \* UF for 3 bedrooms BD 300
- \* Electricity, water internet included (BD 40 Limit)
- \* 24 hours security, gym, pool

 **Jalal Al Moosawi**  
(+973) 3332 3382

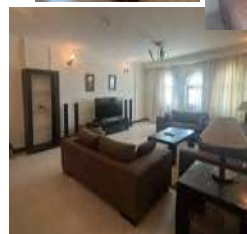
 [info@seyaj-bh.com](mailto:info@seyaj-bh.com)



04:00..... Walk to the RCSI gate



Click on the Number to get the Location



## AL MOHANDSIN

# 15

\* FF for 2 bedrooms BD 400

\* Electricity, water internet included (BD 40 Limit)

\* Gym, internet , pool & 24 hours security

 07:00..... Walk to the RCSI gate



 **Jalal Al Moosawi**  
(+973) 3332 3382

 [info@seyaj-bh.com](mailto:info@seyaj-bh.com)

## THE ONE Tower

# 16




\* FF Studio apartment BD 270


\* Electricity, water internet included (BD 20 Limit)

\* Gym, pool & Game hall

\* 24 hours security



 **Jalal Al Moosawi**  
(+973) 3332 3382

 [info@seyaj-bh.com](mailto:info@seyaj-bh.com)

 04:00..... Walk to the RCSI gate



Click on the Number to get the Location





## MERAL 2

# 17

- \* FF for 2 Bedrooms BD 350
- \* Electricity, water internet included (BD 20 Limit)
- \* 24 hours security



04:00..... Walk to the RCSI gate



Only Family



Registered



**Ahmed**  
(+973) 3965 5154

## TEHAMA Tower

# 18



- \* FF for 1 Bedroom BD 350 (BD 20 Limit)
- \* FF for 2 Bedrooms BD 450 (BD 30 Limit)
- \* Electricity, water internet included
- \* Steam, sauna, ladies + men's gym, & pool
- \* 24 hours security



Family / STUDENT



Registered



**Jalal Al Moosawi**  
(+973) 3332 3382



info@seyaj-bh.com



04:00..... Walk to the RCSI gate



Click on the Number to get the Location




## BURJ DALIA

# 19

- \* FF for 2 Bedrooms BD 400 - 450
- \* FF for 3 bedrooms BD 500
- \* Electricity, water internet included (BD 35 Limit)
- \* Gym, pool
- \* 24 hours security

 04:00..... Walk to the RCSI gate




 **Watch Man**  
(+973) 3418 5490

## HANAN Tower

# 20



- \* FF for 2 Bedrooms BD 450
- \* Electricity, water internet included (BD 30 Limit)
- \* 2Pool, gym, party hall, game hall, Cinma,
- \* 24 hours security & cleaning

 **Jalal Al Moosawi**  
(+973) 3332 3382

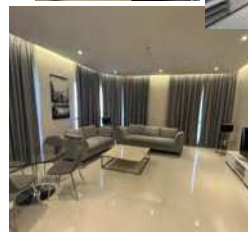
 [info@seyaj-bh.com](mailto:info@seyaj-bh.com)

 04:00..... Walk to the RCSI gate



Click on the Number to get the Location





## BUSAITEEN VIEWS

# 21



- \* FF for 1 bedroom BD 500 (BD 30 Limit)
- \* FF for 2 bedrooms BD 550 (BD 30 Limit)
- \* Electricity, water internet included
- \* gym & pool
- \* 24 hours security



04:00..... Walk to the RCSI gate



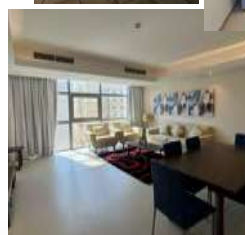
**Jalal Al Moosawi**  
(+973) 3332 3382



info@seyaj-bh.com

## ALMUHANA Tower

# 22



- \* FF for 1 Bedroom BD 350 (BD 20 Limit)
- \* FF for 2 Bedrooms BD 450 (BD 30 Limit)
- \* Electricity, water internet included
- \* gym, pool & play Room
- \* 24 hours security



**Jalal Al Moosawi**  
(+973) 3332 3382



info@seyaj-bh.com



04:00..... Walk to the RCSI gate



Click on the Number to get the Location



## DAR ABRAR

# 23

- \* FF for 1 Bedroom BD 350
- \* FF for 2 Bedrooms BD 450
- \* FF for 3 Bedrooms BD 550
- \* Electricity, water internet included (BD 30 Limit)
- \* Ladies + men's gym, pool & Suna
- \* 24 hours security



05:00..... Walk to the RCSI gate



Family / STUDENT



Registered



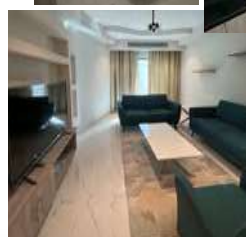
**Jalal Al Moosawi**  
(+973) 3332 3382



info@seyaj-bh.com

## HABITAT BUILDING

# 24



Family / STUDENT



Registered



**Jalal Al Moosawi**  
(+973) 3332 3382



info@seyaj-bh.com

- \* FF for 1 Bedroom BD 400 (BD 20 Limit)
- \* FF for 2 Bedrooms BD 520 (BD 30 Limit)
- \* Electricity, water internet included
- \* Gym, pool & Study Room
- \* 24 hours security



05:00..... Walk to the RCSI gate



Click on the Number to get the Location





## NADA Tower

# 25

\* UF for 2 bedrooms BD 300

\* 24 hours security

\* Parking



07:00..... Walk to the RCSI gate



Only Family



Registered



**Jalal Al Moosawi**  
(+973) 3332 3382



info@seyaj-bh.com

## BJ Tower

# 26



Family



NOT Registered

\* SF for 3 bedrooms BD 350

\* Electricity, water internet included (BD 30 Limit)

\* 24 hours security

\* Parking



**Jalal Al Moosawi**  
(+973) 3332 3382



info@seyaj-bh.com



04:00..... Walk to the RCSI gate



Click on the Number to get the Location

## Disclaimer

The properties listed, including the owners/advertisers of same, are not inspected or vetted by RCSI Bahrain. The accommodation list is aimed at putting students in contact with individuals/bodies offering accommodation. As the University does not inspect/vet these properties or their owners/advertisers, and in the absence of any legal or binding agreement between said owners/advertisers and RCSI Bahrain, the University cannot be held liable for any accommodation, contacts, contracts, introductions and/or arrangements arising from the use of this list



### Registered

You are able to obtain the municipality letter (proof of address) to issue the smart card.



### Not Registered

Apartments in these buildings are under the landlord's name. Tenants will not be able to obtain a Proof of Address letter from Municipality, which is required for issuing a Bahraini ID card. Please note that some landlords may charge a fee in order to register with Municipality



04:00... Walk to the RCSI gate



We advise students to choose apartments in registered buildings to ease the process of obtaining a Bahraini national ID card (CPR / Smart Card)







# RCSI

## MEDICAL UNIVERSITY OF BAHRAIN

**Accommodation List 2024 - 2025**